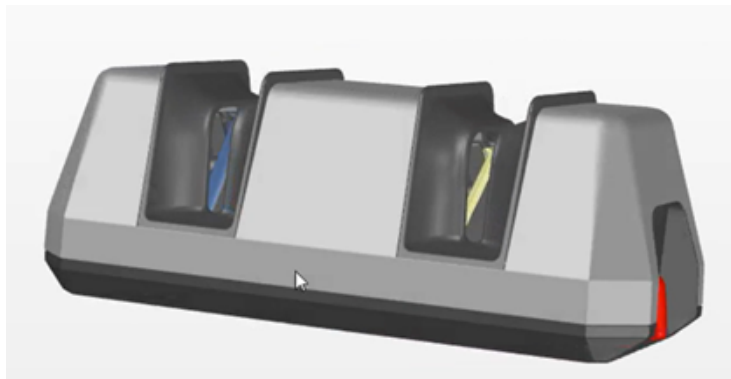


NEW! Unique innovation

Hand tool for manual grinding and polishing of knives

Self Adjusting Function SAF  for optimal sharpening results.

ELNOR sharpener demonstration



The ELNOR knife sharpener is equipped with a new unique sharpening system called **SAF**, which is adjustable to the knife edge. (Patent Pending.)

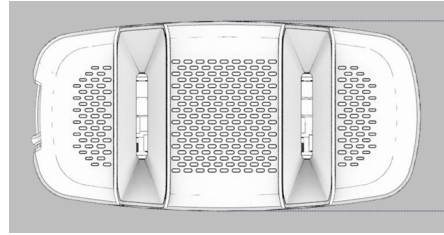
The ELNOR is a manual hand tool where the knife edge is sharpened in a groove with four diamond-coated pins and polished in another groove with four ceramic pins. The pins are placed in an X shape.

There is a choice between two different sharpening and polishing angles: 30° or 40°. Due to the individually elastic, revolving diamond-coated and ceramic pins, the knife edge is always in full contact with the sharpening and polishing surfaces in all directions of movement.

ELNOR guarantees a professional, efficient sharpening and polishing result with optimal sharpness.

DIAMOND GRINDING

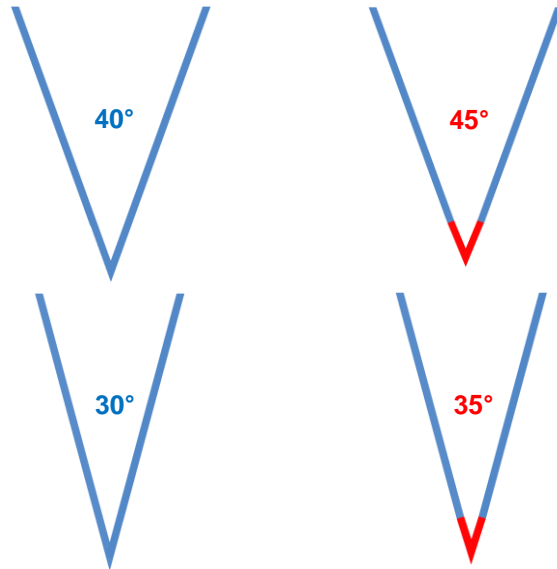
CERAMIC POLISHING



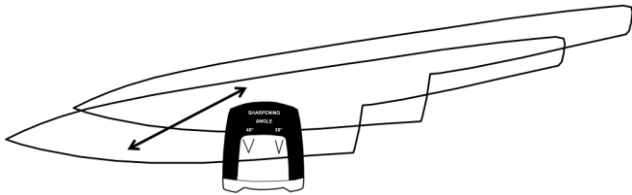
GRINDING — AND — POLISHING ANGLE°

step 1

step 2



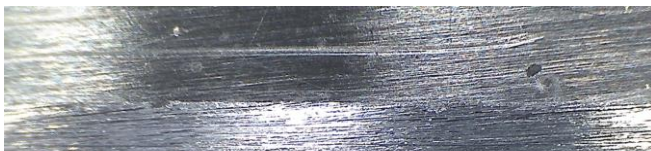
THE SHARPENING MOVEMENT



Microscope photos



Used knife with damaged edge.



Diamond step 1. 30° sharpening movement about 20 times.



Ceramic step 2. 35° polishing movement about 15 times.

Technical Information ELNOR Sharpner® MODEL NO. 5201

Sharpening angle: Diamond 40° - 30°

Polishing angle: Ceramic 45° - 35°

Diamond sliders: Four pieces. Diamond 54μ

Active surface 445 mm²

Ceramic sliders: Four pieces. Ceramic polishing

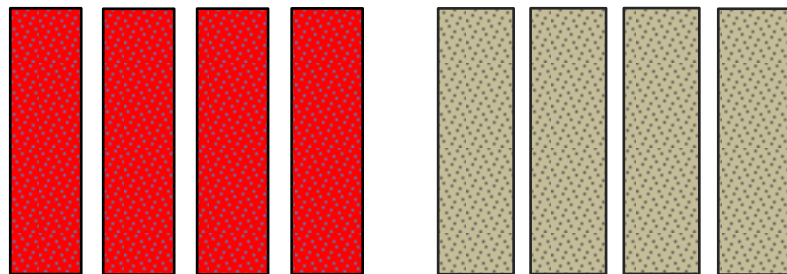
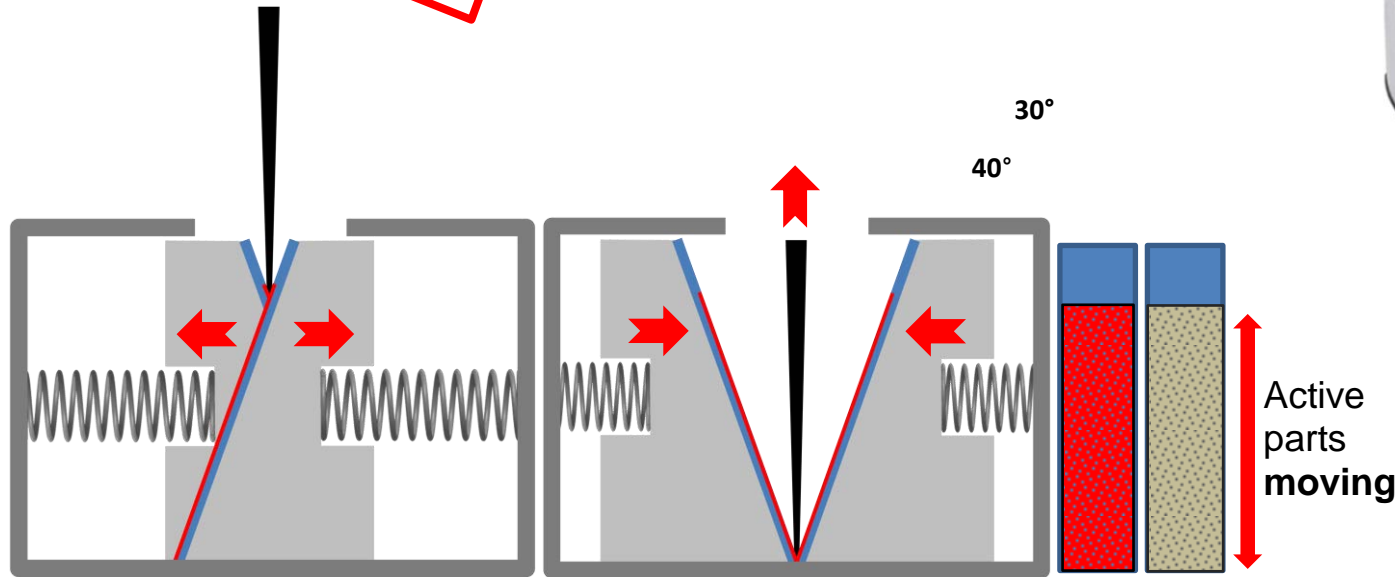
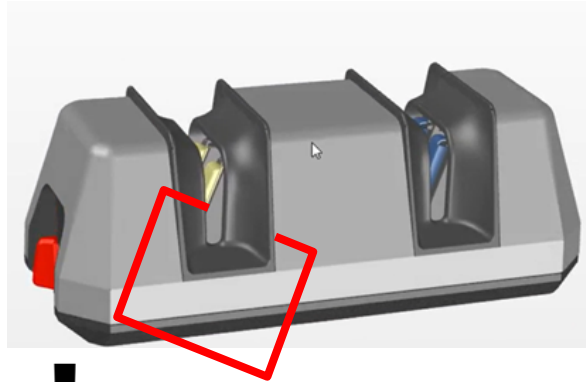
Active surface 479 mm²

Subject to alteration

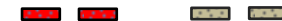
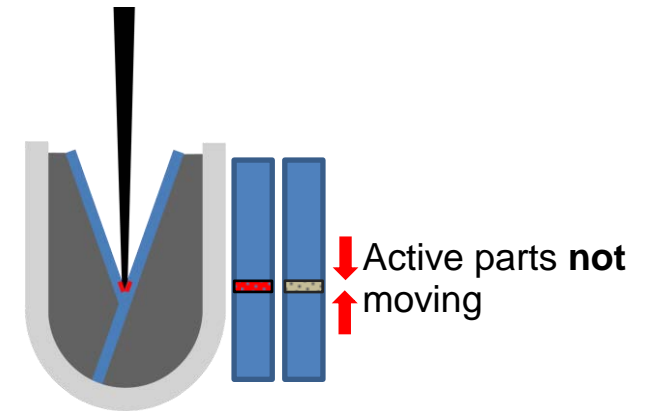
New! Unique innovation for manual grinding of knives

WHAT'S THE DIFFERENCE?

Existing knife sharpeners



Active surface: Diamond 445 mm² + Ceramics 479 mm²

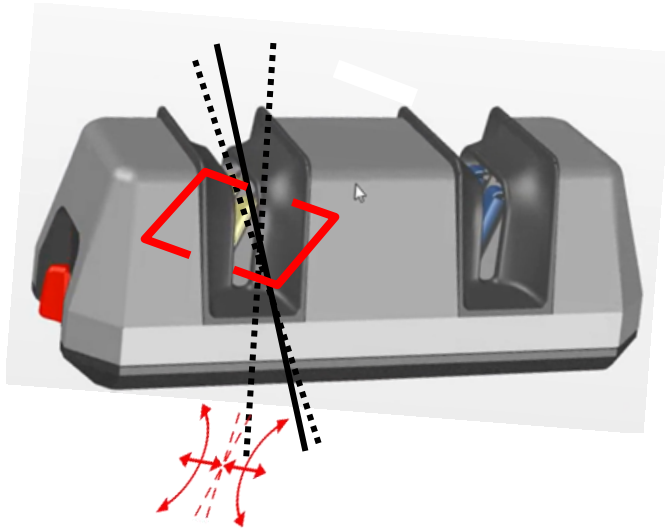


Diamond 4 mm² + Ceramics 4 mm²

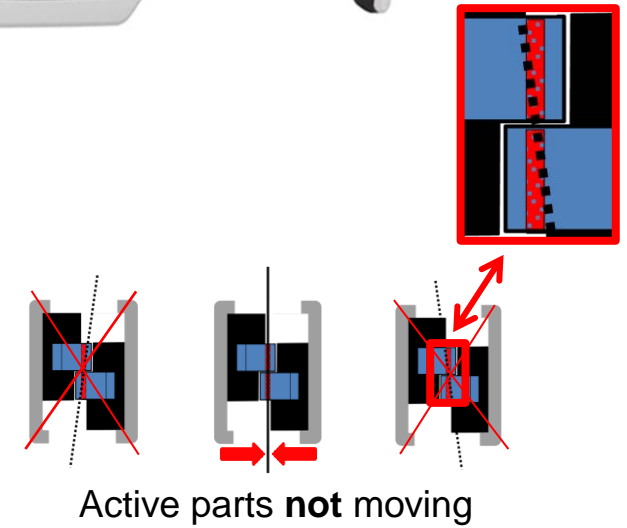
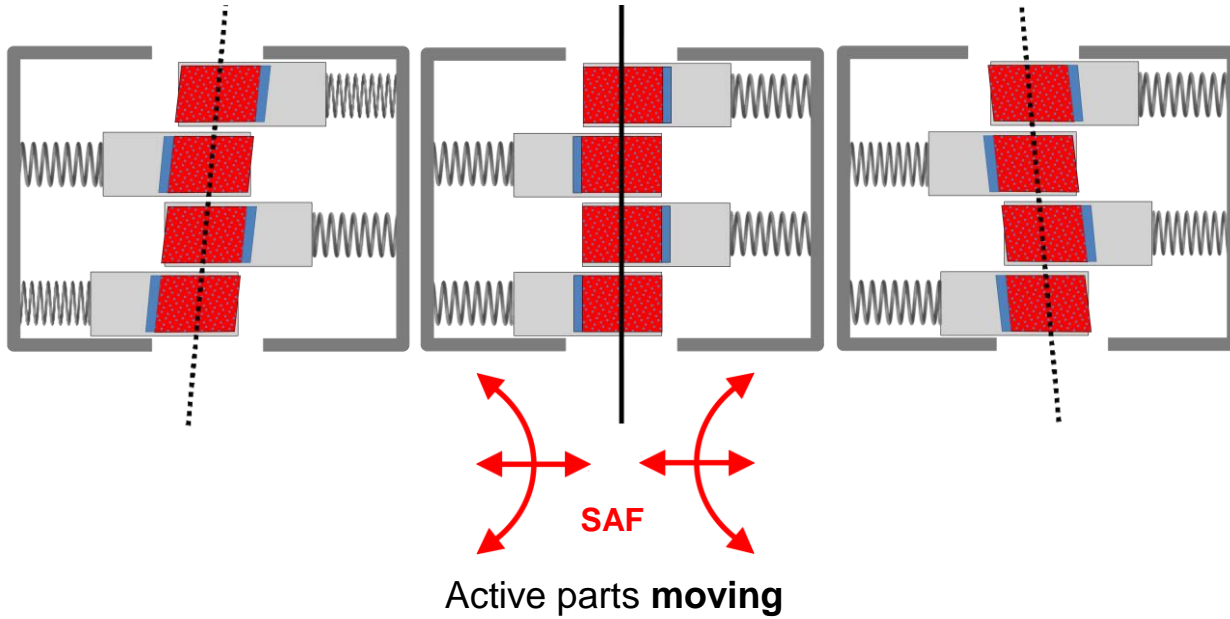
New! Unique innovation for manual grinding of knives

WHAT'S THE DIFFERENCE?

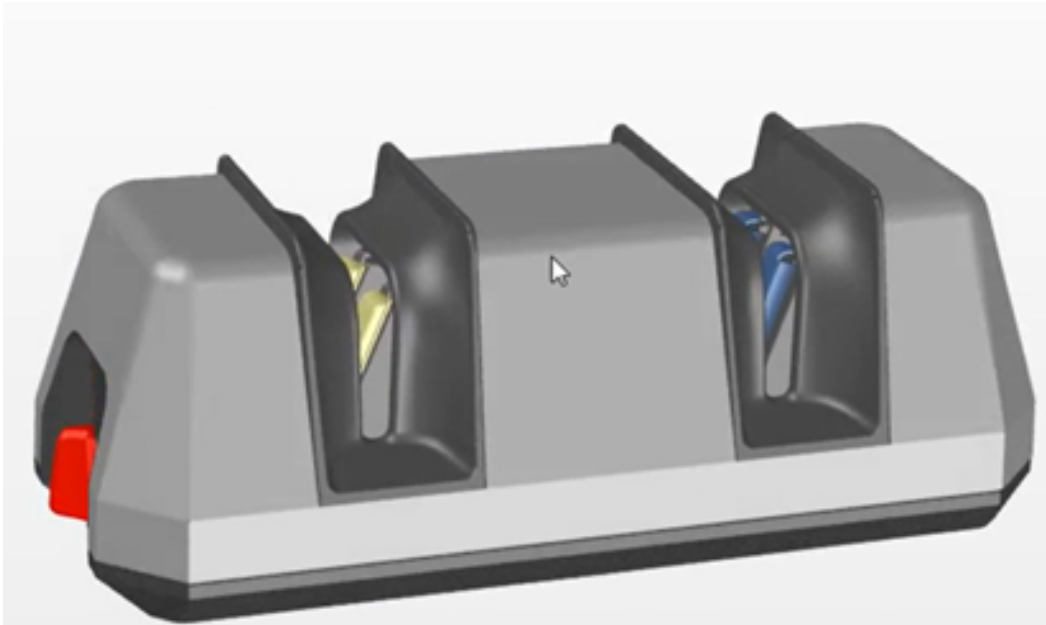
Existing knife sharpeners



Self Adjusting Function SAF for optimal sharpening results

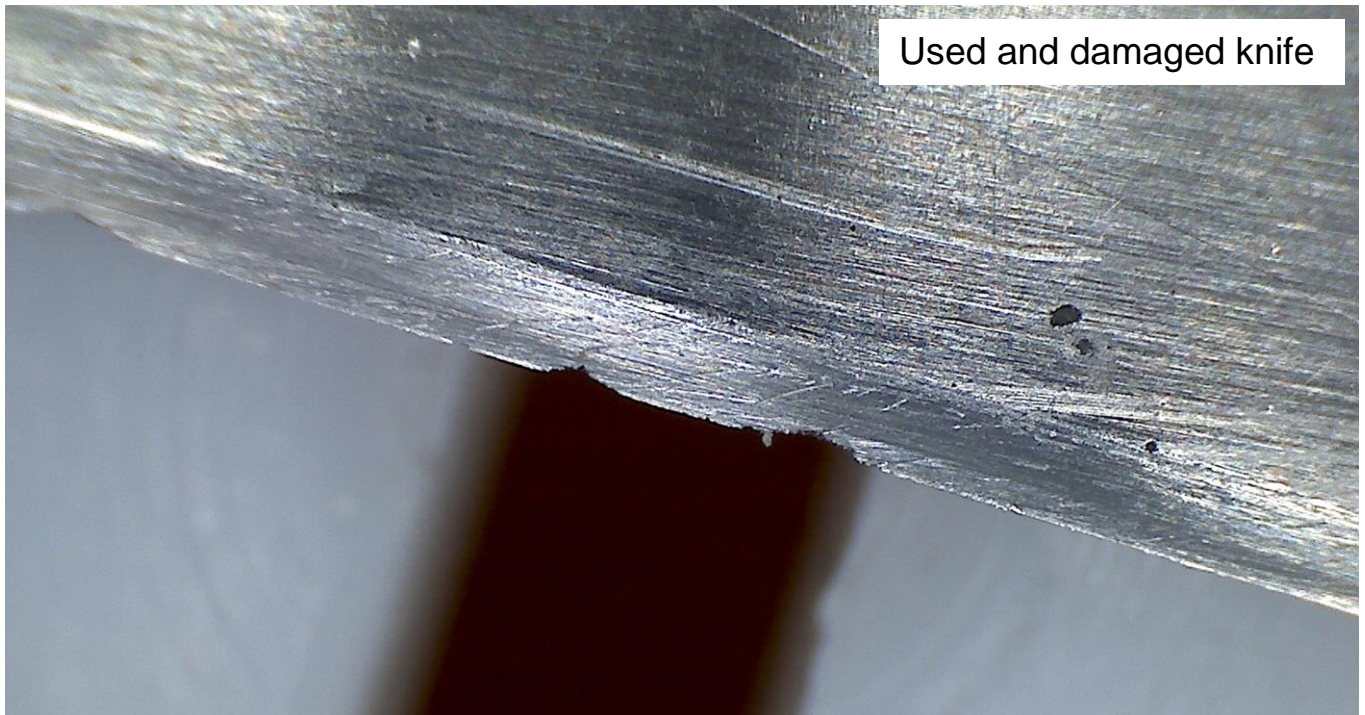


Hand tool for grinding and polishing



EDGE TEST: Used and damaged knife

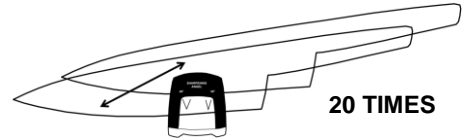
Pictures from
USB microscope



Used and damaged knife

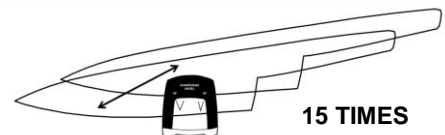
Used and damaged knife + EDGE FIX DIAMOND

THE SHARPENING MOVEMENT



Used and damaged knife + EDGE FIX DIAMOND + EDGE FIX CERAMIC

THE SHARPENING MOVEMENT



EDGE TEST

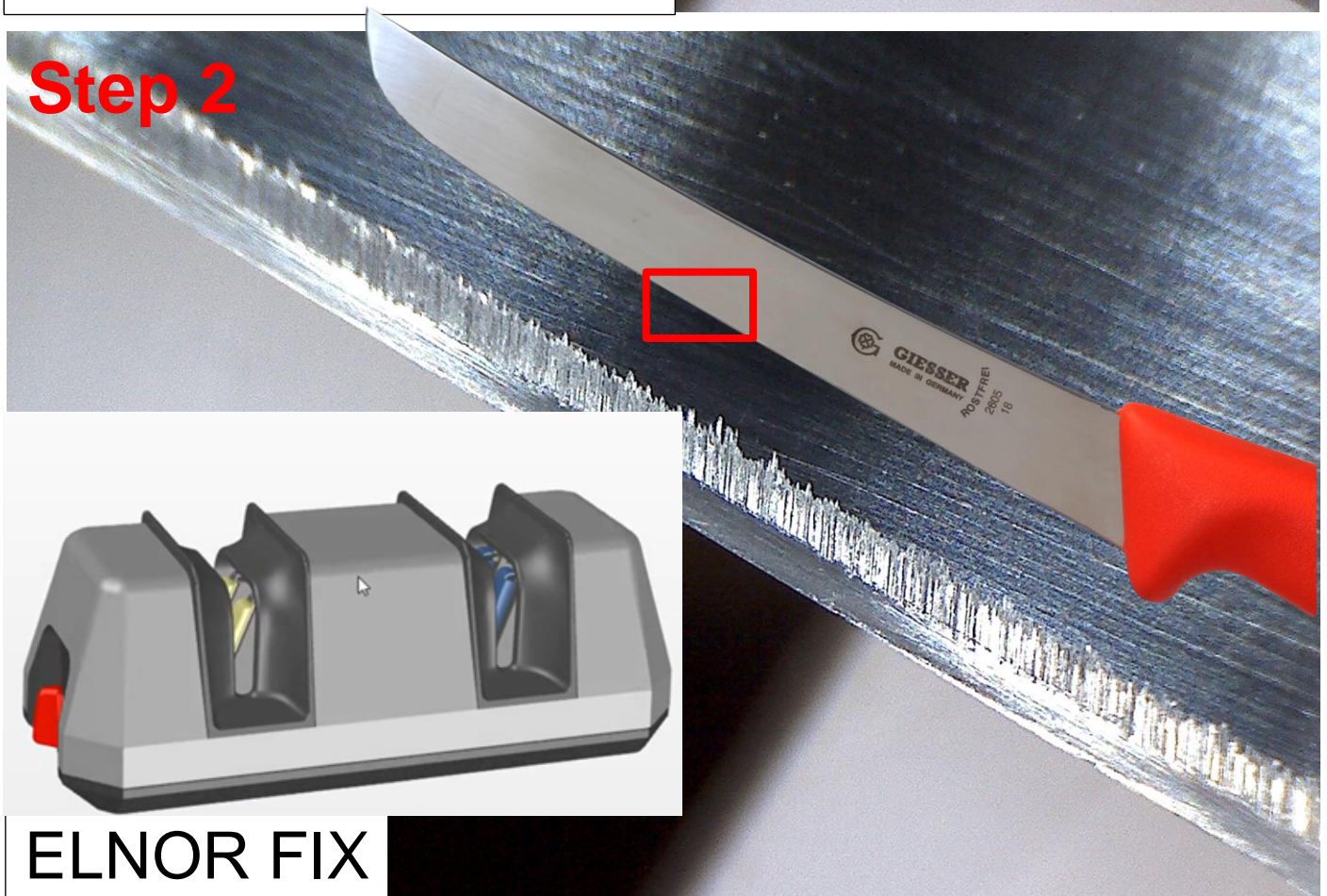
ELNOR - MinoSharp

Pictures from microscope: Step by step 1-2

Step 1



Step 2

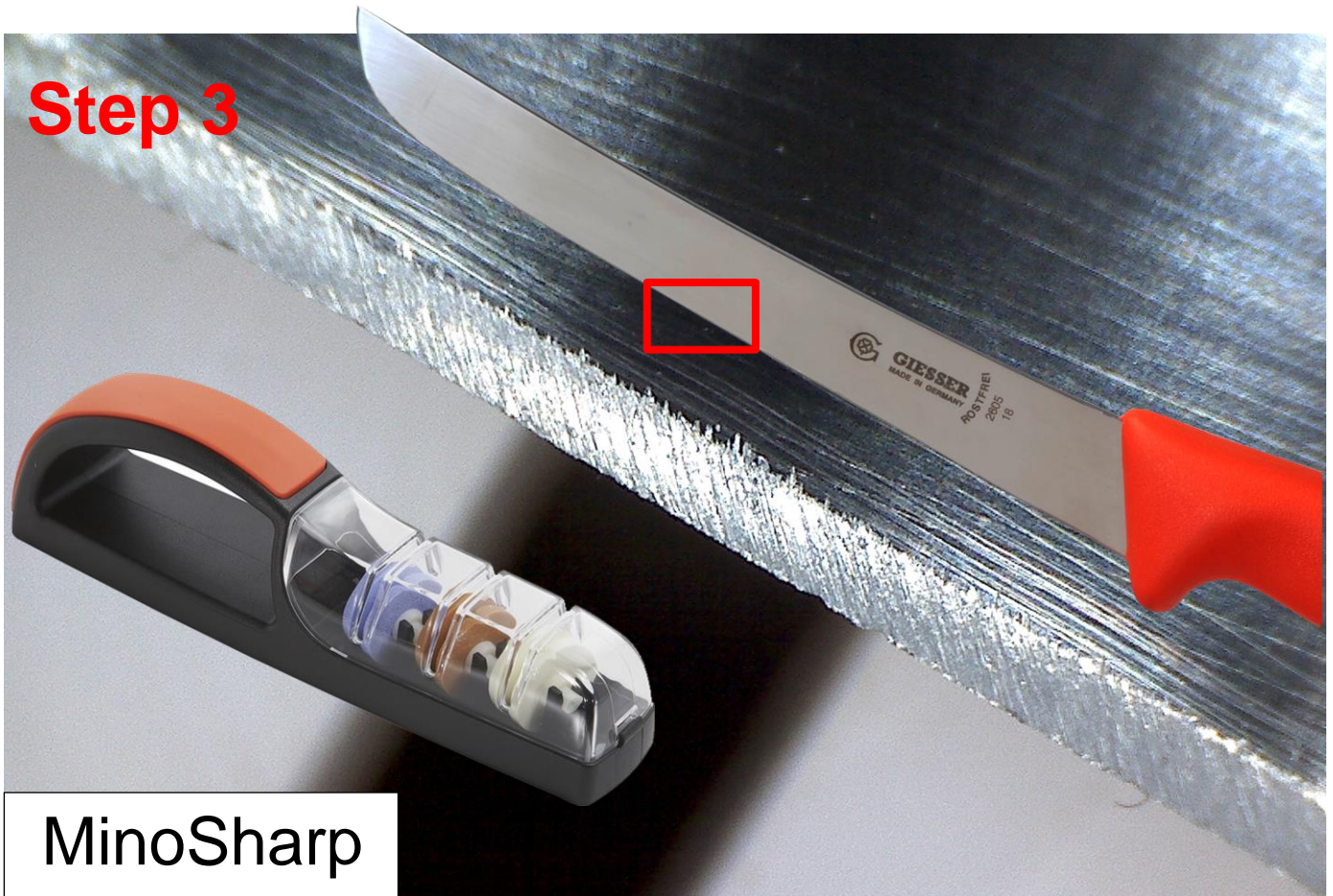


ELNOR TEST

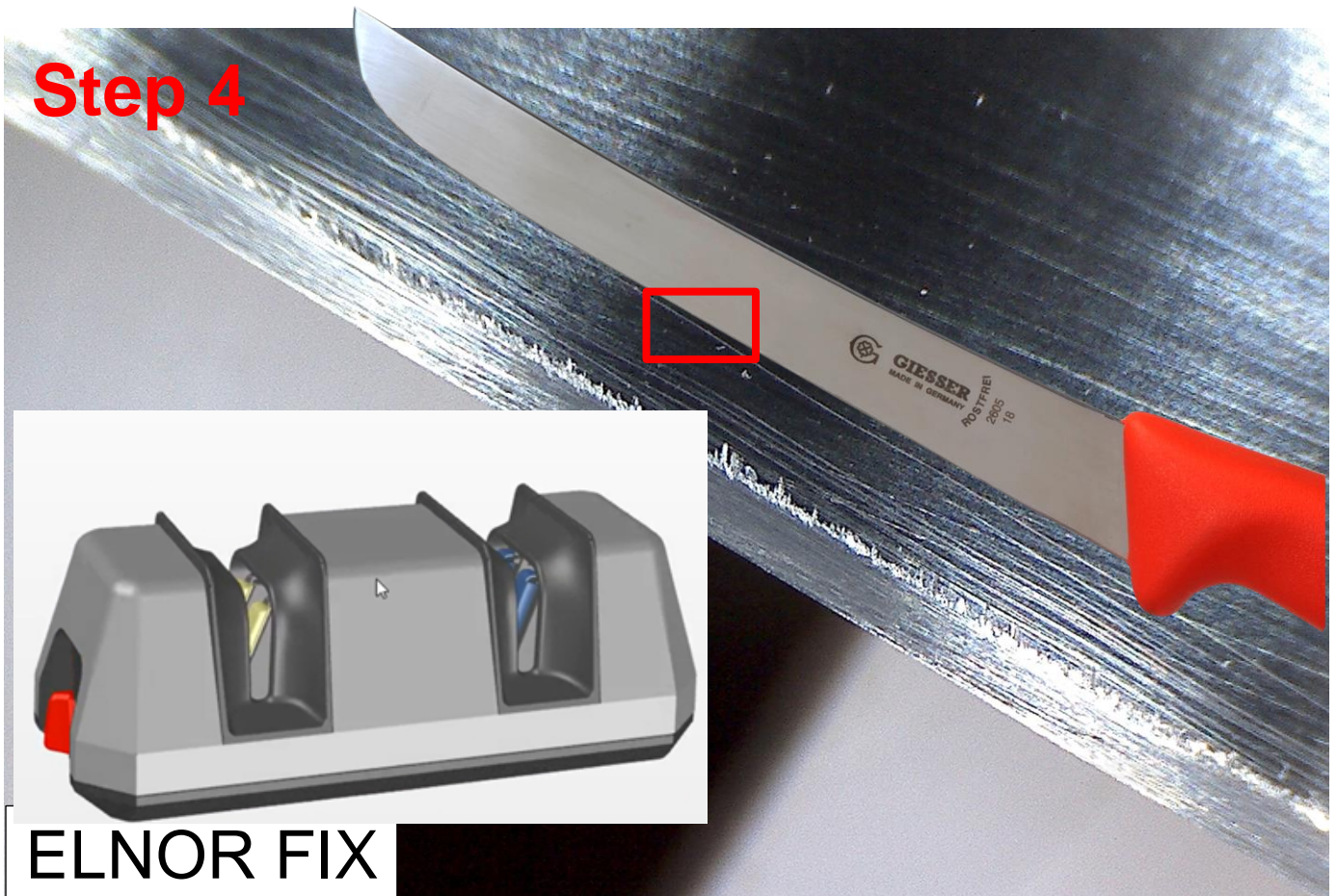
EDGE FIX - MinoSharp

Pictures from microscope: Step by step 3-4

Step 3

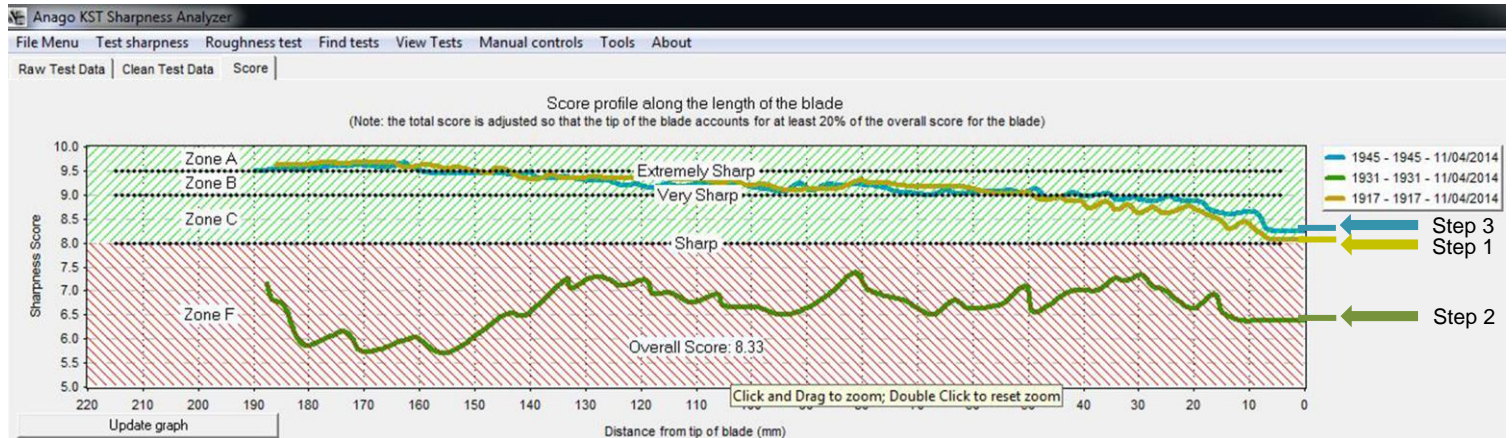


Step 4



Test of sharpness: Step by step

Anago KST Sharpness Analyzer. Instant Work AB Jönköping 2014-11-04



G-2 Kockkniv 20cm

1. Original GLOBAL sharpness.

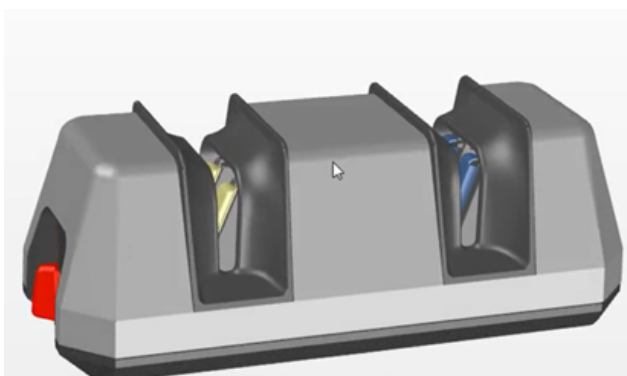


MinoSharp PLUS 3

1. Original GLOBAL sharpness + 2. MinoSharp.



1. Original GLOBAL sharpness + 2. MinoSharp + 3. ELNOR FIX.



ELNOR FIX creates a new edge and even improve Global original sharpness.

